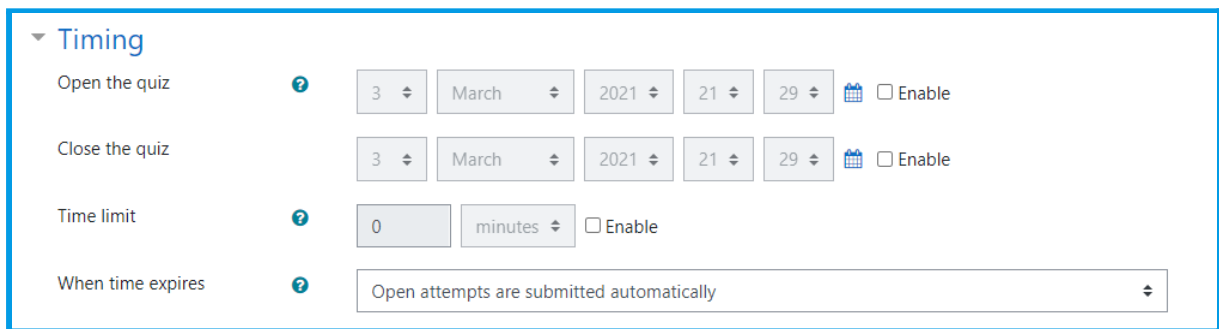


## Manual SEB Configuration Guideline

- Download SEB **version 3.2 for Windows** or **version 2.3 for macOS** from [https://safeexambrowser.org/download\\_en.html](https://safeexambrowser.org/download_en.html) and **Install** on two separate devices.  
(Please make sure you are downloading the exact same version depending on your OS.)
- Login to OAS, go to the relevant course page, **Turn editing on > Add an activity and Select Quiz.**
- Name the quiz with your course code and title.  
Eg: CO222 - Programming Methodology
- **Set the exam timing as per the schedule given by AR.**

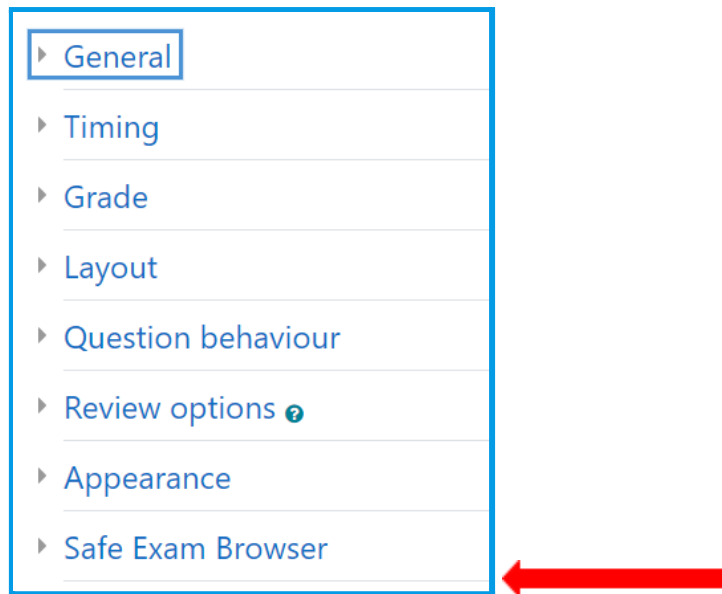


The screenshot shows the 'Timing' section of a quiz configuration page. It includes the following settings:

- Open the quiz:** A date picker set to 3 March 2021 at 21:29. There is an 'Enable' checkbox.
- Close the quiz:** A date picker set to 3 March 2021 at 21:29. There is an 'Enable' checkbox.
- Time limit:** A text input field containing '0', a dropdown menu set to 'minutes', and an 'Enable' checkbox.
- When time expires:** A dropdown menu with the selected option 'Open attempts are submitted automatically'.

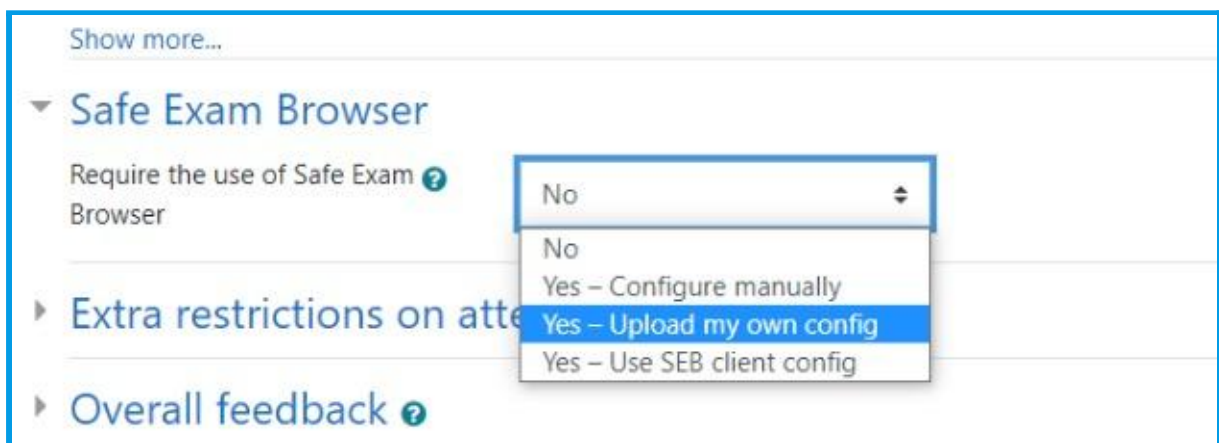
*Figure 1: Set up exam timing on the quiz*

- Set the other quiz settings as per the assessment guidelines given by AR and add the Questions.
- To configure SEB, **Expand Safe Exam Browser** in quiz settings.



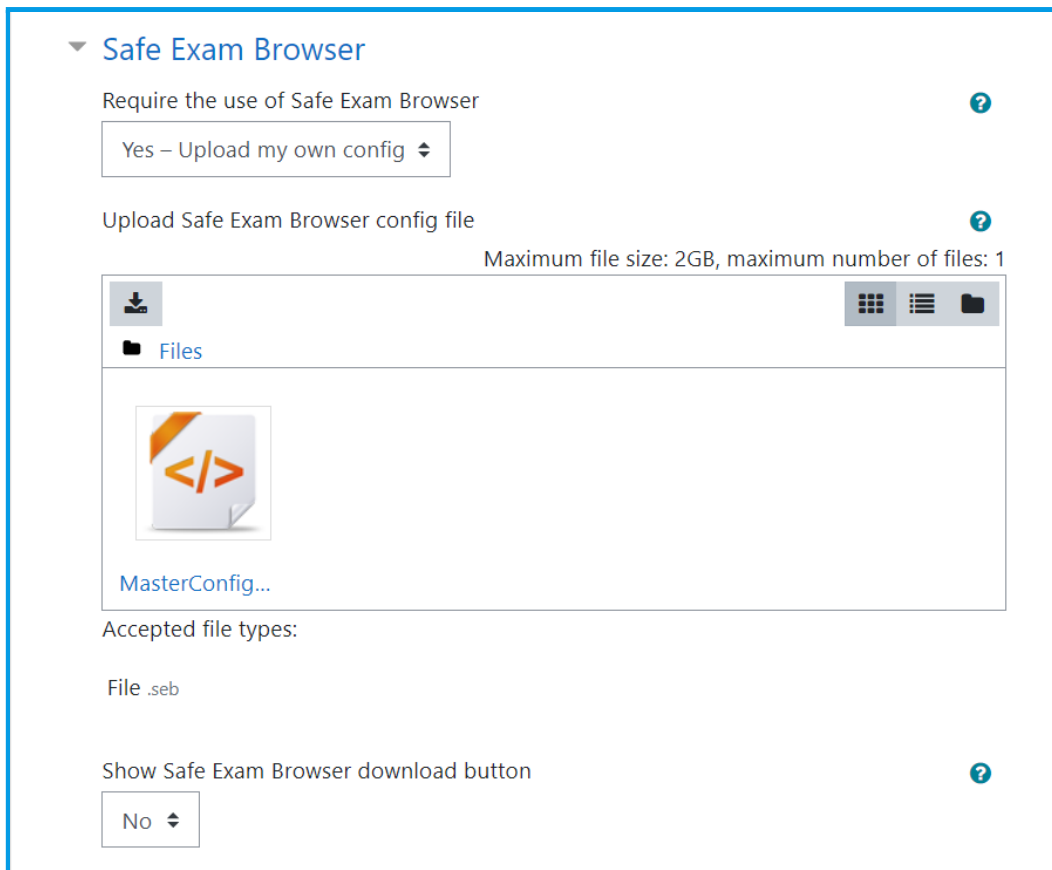
*Figure 2: Expand Safe Exam Browser in quiz settings*

- From the drop-down menu, select **Yes - Upload my own config**.



*Figure 3: Select Yes - Upload my own config*

- Upload the [MasterConfiguration.seb](#) file
- Select “No” for show Safe Exam Browser download button

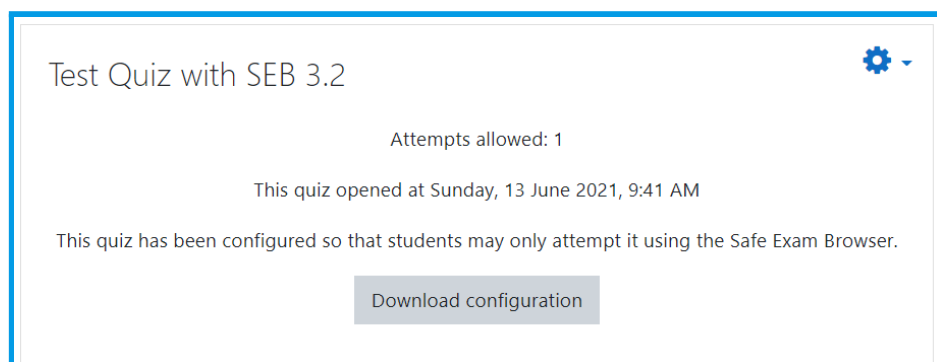


*Figure 4: Upload the MasterConfiguration.seb File*

- **Save the quiz.**

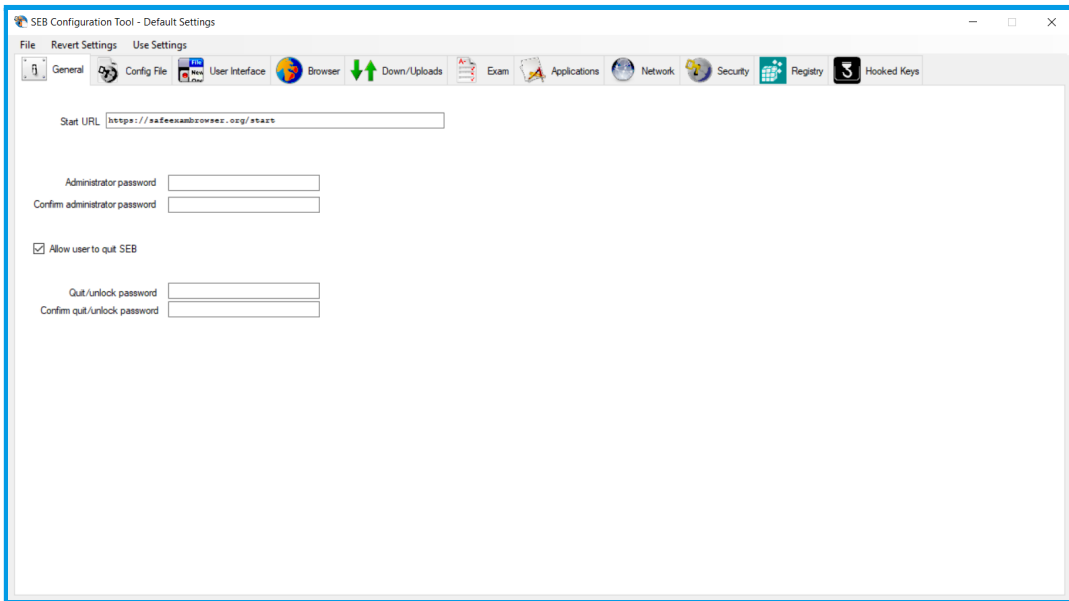
*Now we need to set up the browser keys for the quiz to make sure candidates are using the same exam configs*

- **View the quiz and Download the configuration file.**  
(This downloaded file will be referred to as the 'examConfig' file)



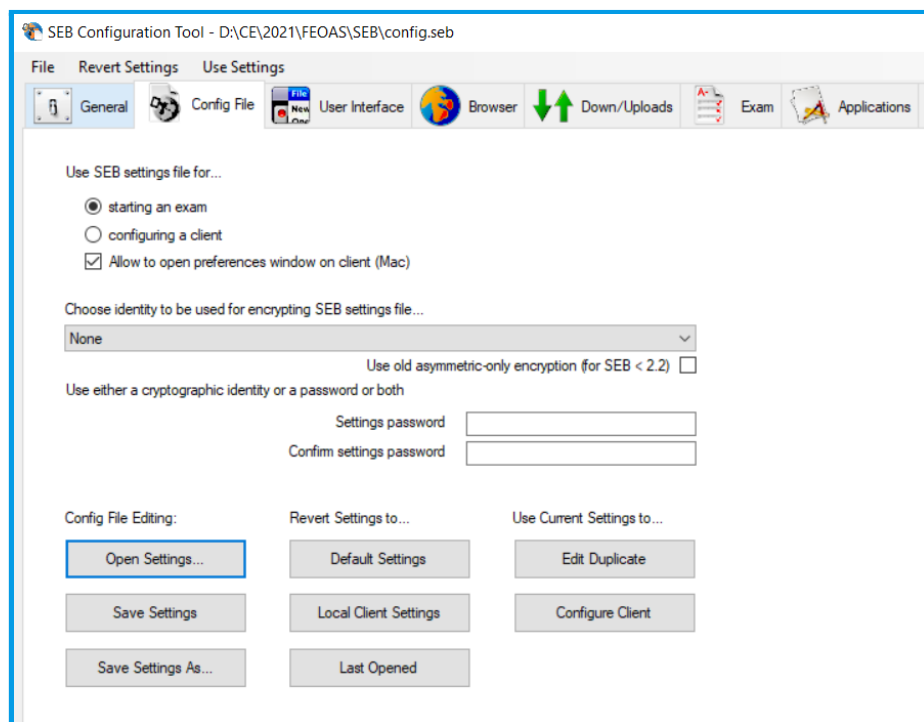
*Figure 5: Download the configuration file*

- **Open SEBConfigTool** (Can be found in path `<SEB_installation_folder>/Configuration`).



*Figure 6: SEBConfig Tool*

- Go to the **“Config File”** tab and click the **“Open settings”** button and choose the previously downloaded ‘examConfig’ file from file explorer.



*Figure 7: Config File Tab – Open settings and choose the configuration file*

- Once the settings are opened go to the **“Exam”** tab and copy the **Browser** key.

If you have students who are using macOS based machines to do the exam, you have to get this browser key for macOS also.

(For that you have to open the config file from SEBConfigTool in MacOS and get the key.)

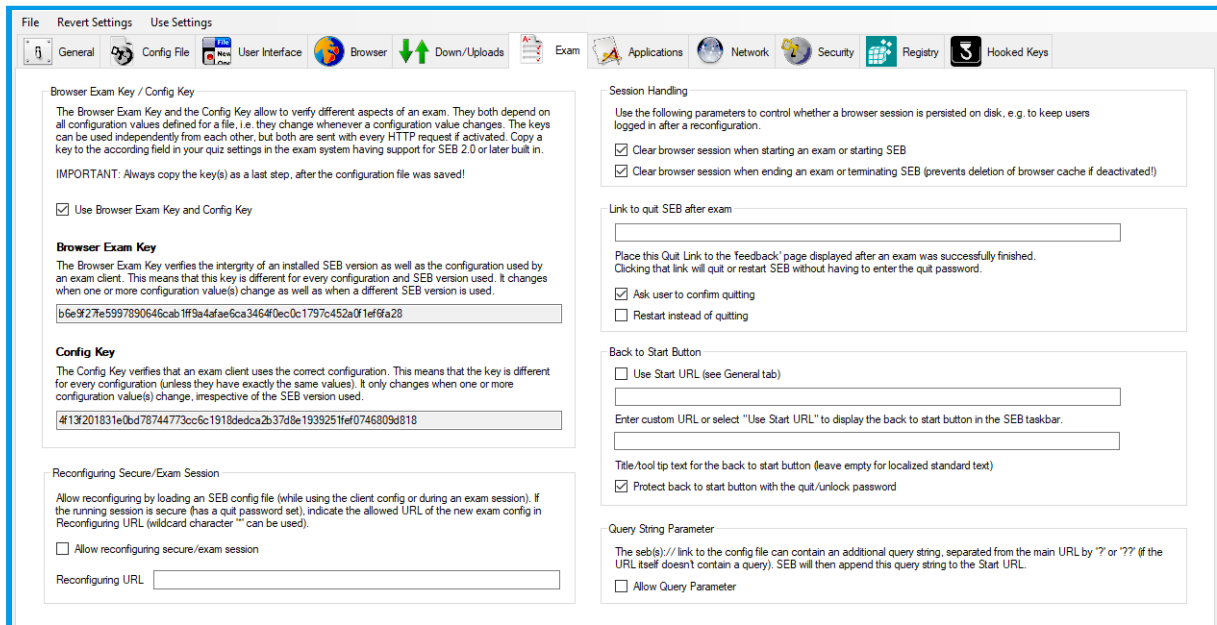
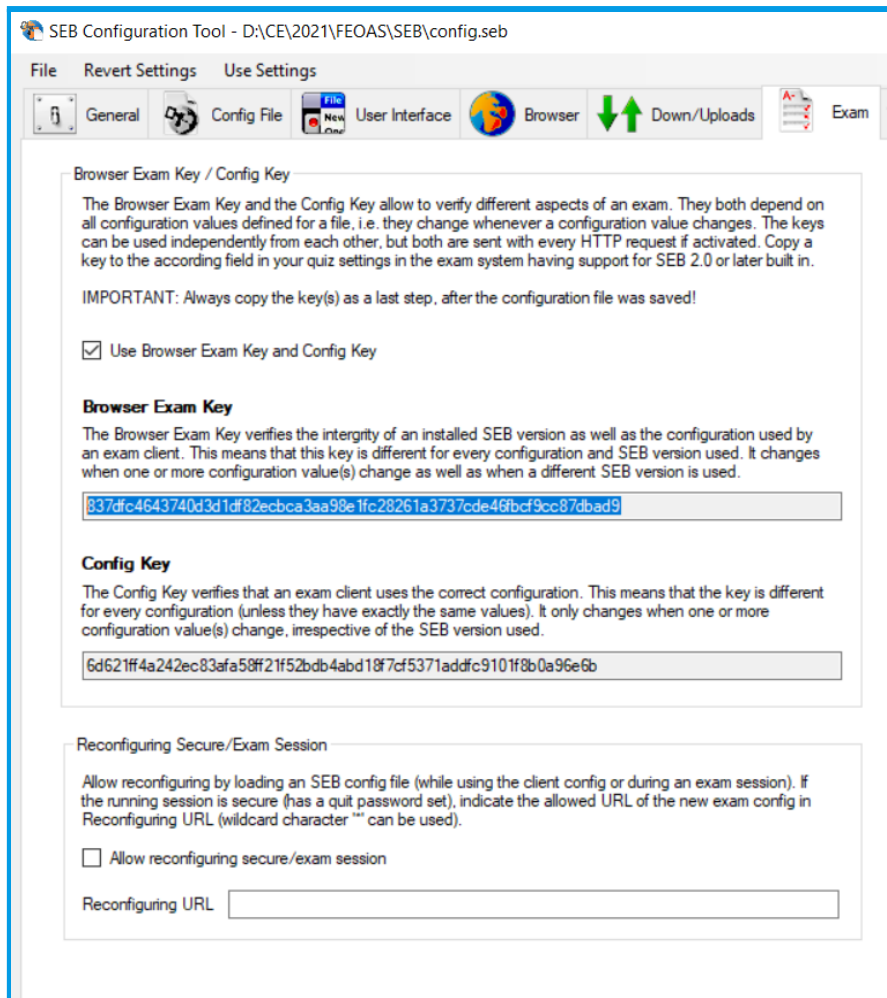
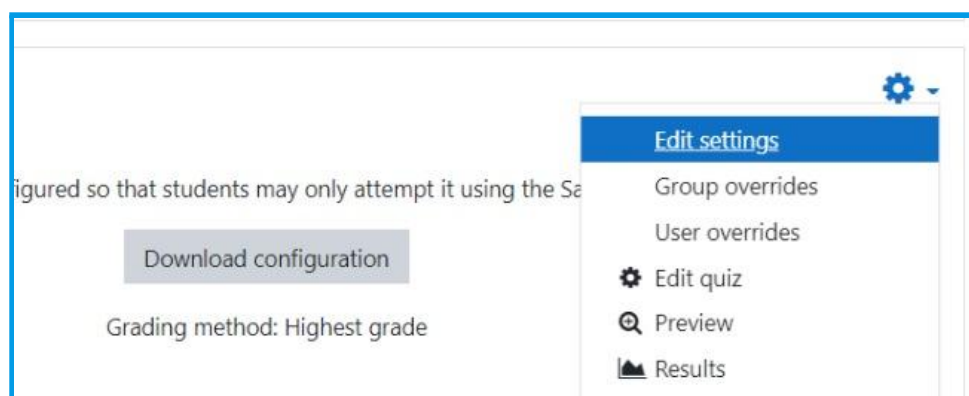


Figure 8: Exam Tab and Browser Key



*Figure 9: Copy the Browser Key*

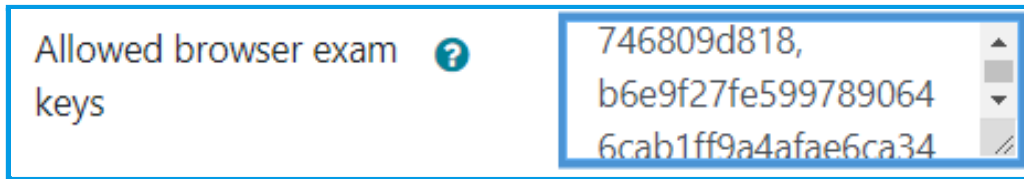
- **Open the Created quiz.**
- **Then, click the Settings button and select Edit settings.**



*Figure 10: Edit settings*

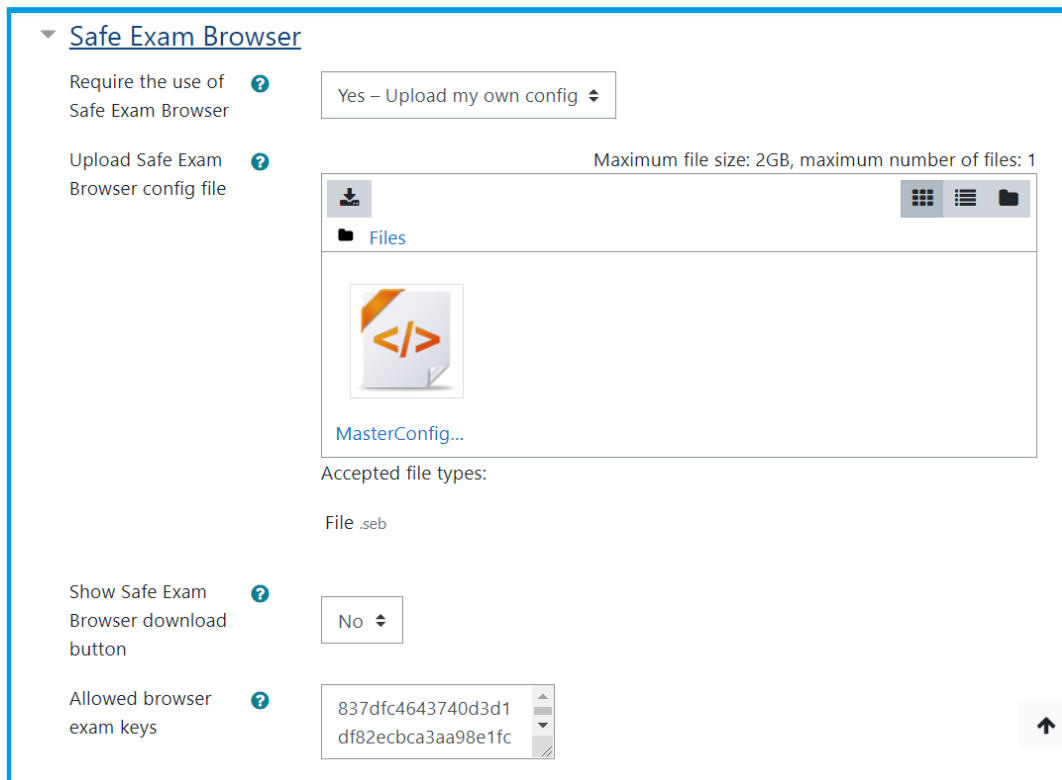
- **In settings open Safe Exam Browser and paste the Windows and macOS Browser keys**

(Make sure to put a comma and keep a new line between 2 keys)



*Figure 11: Paste browser keys*

- The final quiz settings for SEB will appear as follows



*Figure 12: Final Quiz Settings*

- **Save the quiz.**
- Now the quiz is ready for the candidates.